



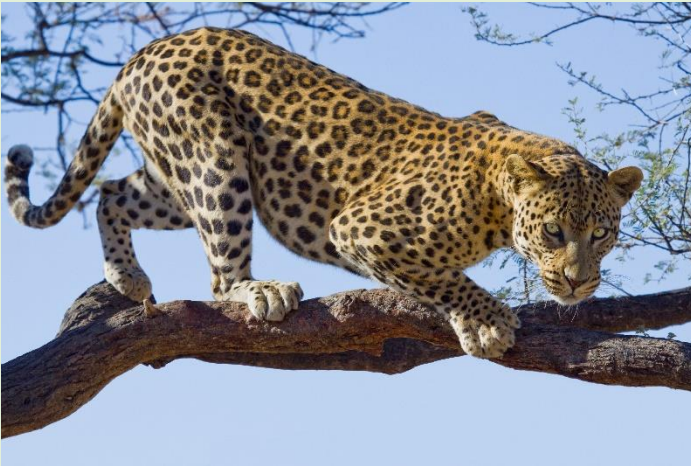
# POLLINA TOURS AND TRAVEL, INC.

95 Broadway Suite 5, Hicksville, NY 11801 Tele: 516 358 1301

Email: [pollin@earthlink.net](mailto:pollin@earthlink.net)

## SOUTH AFRICA, ZIMBABWE, BOTSWANA & KENYA

**JULY 04 – 20, 2025**



[BOOK BY CLICKING HERE](#)

### JULY 04th: USA / Cape Town, South Africa

This afternoon, fly to Cape Town, South Africa from USA on your own.

### JULY 05th: Cape Town

Arrive in Cape Town and transfer to the hotel.  
Overnight in Cape Town.

### JULY 06th: Cape Town

After early breakfast, enjoy the tour of Cape Town, also known as the Mother City. It is here that colonial South African history has its roots.



The Dutch, French, German and English disembarked at Table Bay Harbor, bringing with them slaves from Eastern and Western Africa as well as slaves from Malaysia, Indonesia and the Philippines. All these ethnic groups, along with the indigenous people, today form the 'Rainbow Nation'. This tour allows us to indulge in the enormous and rich heritage of this beautiful city as we bask in its extraordinary history. Attractions include City Hall and Green Market Square, a walk through the Company Gardens and we will also pass the Houses of Parliament.

On the other side of town, we'll venture to Signal Hill, the Table Mountain on cable car, Clifton and Camps Bay and the colorful Malay Quarters also known as Bo Kaap. Continue your tour of Cape Town with a visit to Robben Island where Nelson Mandela was imprisoned for 27 years. Dinner at local restaurant.  
Overnight in Cape Town.

### JULY 07th: Cape Town



Depart by private motor coach to view the beauty of the Cape of Good Hope along the coastal destinations of the Cape's Magnificent Mile. We move past the beautiful beaches of Hout Bay and Noordhoek.

If there is time, we will include Ostrich Viewing along the way as we head towards Cape Point, the mystical meeting





# POLLINA TOURS AND TRAVEL, INC.

95 Broadway Suite 5, Hicksville, NY 11801 Tele: 516 358 1301

Email: [pollin@earthlink.net](mailto:pollin@earthlink.net)

## SOUTH AFRICA, ZIMBABWE, BOTSWANA & KENYA

JULY 04 – 20, 2025

point of the world's two greatest oceans. From Cape Point, after viewing a magnificent panorama of the Cape and watching many species of fauna and flora (including the Cape's unique Chacma baboons), we head for the penguin colony. This is nestled in a sheltered cove between the naval suburb of Simons Town and Cape Point. If you are lucky, you may spot the largest animal on the earth-the whales during this scenic ocean drive.

Overnight in Cape Town.

### JULY 08<sup>th</sup>: Cape Town / Kruger

After early breakfast, check out and transfer to airport for flight to Mpumalanga Airport. Upon arrival, drive to Jungle resort inside National Park. After a brief orientation by the staff of the lodge, you will check in at the Lodge.



After lunch at the Lodge, embark on the exciting jungle safari. Southern Africa captivates everyone who is lucky enough to experience its power and magic. The concept of 'Safari' conjures up images of adventure, dramatic landscapes and exciting wildlife. We will stay in our luxury private safari lodge located inside the Game Reserve which is geographically integrated with the Kruger National Park. Evening falls and you prepare for the night safari. As the fierce heat of the day cools, the inhabitants of the bush become restless, and the animals move out of the shade of the trees. The call of the crested francolin reverberates through the bushveld and birds increase the volume of their song. You will be aware of colors softening to the beautiful, gentle hues that vary with each season.



New scents fill the air and as the sun dips behind the horizon your Ranger will choose a spot where you can stretch your legs and enjoy sundowners alongside the vehicle. Watch in awe as the sky turns to the sensational vibrant reds, gold and oranges typical of an African sunset.



There is a lull as the animals sense the transition into a time of increased danger. It is during evening safaris that the nocturnal hunters start stirring, and their prey needs to be alert for survival through the night.

During your safari you may be lucky enough to watch lions prepare for their evening hunt. Their long bodies stretch to ease muscles cramped from lying in the shade during the day; sinews are lengthened and claws sharpened against a





# POLLINA TOURS AND TRAVEL, INC.

95 Broadway Suite 5, Hicksville, NY 11801 Tele: 516 358 1301

Email: [pollin@earthlink.net](mailto:pollin@earthlink.net)

## SOUTH AFRICA, ZIMBABWE, BOTSWANA & KENYA

JULY 04 – 20, 2025



tree; the vegetation is marked with scent, and the wind checked for smells; only then do they set off in a slow, loose-jointed, arrogant amble.



There are numerous nocturnal hunters and on your evening safari, with the help of a spotlight, a leopard's eyes may reflect from a nearby tree. Or you may be lucky enough to spot another smaller predator, a genet, African civet or African wild cat. One can come across scenes at night that become etched in memory: elephants moving heavily but silently in the moonlight; the incredible flying leaps of bush babies from treetop to treetop, and the red shine from a lion's eyes as it looks up from its kill.

Overnight in the Lodge

### JULY 09<sup>th</sup>: Kruger National Park

An early morning call from the Ranger will wake you before first light, while the kitchen brews hot coffee or tea, and prepares cool fruit juices with a muffin, rusk or other freshly made delicacy. So begins the morning safari.

The bush is already alive, the air filled with birdsong as the rising sunlight dances off beads of dew on spiders' webs. Nobody, not even the tracker who can read the bush veld like a book, knows what's in store. He will watch the road for spoor, leaning forward intently to find any print left by

a predator during its hunt in the dark. There may be hushed discussions in Shangaan between Ranger and Tracker, and brief radio interactions from one vehicle to another. Sharing information ensures that the occupants of each Land Rover have the best chance of a wide range of sightings during their drives - and ensures control and responsible behavior as the vehicles move in close to the animals.

On the morning safari walk you can be part of a small group that sets out on foot after breakfast. A walk is an opportunity to feel the pulse of Africa through the soles of your feet and experience the bushveld at close quarters. The jungle boasts approximately 350 different species of birds, a paradise for birdwatchers. Raptors are plentiful, including 11 species of owl, the seldom seen cuckoo hawk and rare bat hawk. There is an endless diversity of trees, shrubs and flowering plants, and whatever the time of year, no two walks are ever the same. We will hopefully encounter all of the Big Five members: the lion, the leopard, the elephant, the buffalo and the rhinoceros. Return to Lodge for lunch. Look out for the Milky Way; it's spectacular when seen from the bush. Try to find the Southern Cross too.

Overnight in the Lodge

### JULY 10<sup>th</sup>: Kruger – Johannesburg

After breakfast, drive to Johannesburg.

In the afternoon tour of Johannesburg and Soweto.



The Story of Johannesburg is the story of Gold. When the first white pioneers arrived in this region, they had no inkling of the wealth that lay beneath their feet. The discovery of the precious metal in the late 1800's changed all of that, and as you will see, today Johannesburg is the



# POLLINA TOURS AND TRAVEL, INC.

95 Broadway Suite 5, Hicksville, NY 11801 Tele: 516 358 1301

Email: [pollin@earthlink.net](mailto:pollin@earthlink.net)

## SOUTH AFRICA, ZIMBABWE, BOTSWANA & KENYA

JULY 04 – 20, 2025

commercial, industrial and mining capital of South Africa. Another fascinating experience is a visit to the pulsating township of Soweto. The mines of old, of course, needed a plentiful supply of cheap labor, and Soweto, together with many of the other townships around Johannesburg, housed the huge numbers of migrant and resilience of the South African nation. We explore this fascinating township, trying to obtain an appreciation for the history and heritage contained within its bounds

Overnight in Johannesburg.

### JULY 11<sup>th</sup>: Johannesburg - Victoria Falls, Zimbabwe

After breakfast, check out of the hotel and transfer to airport for flight to Victoria Falls. Arrive Victoria Falls and transfer to hotel. In the afternoon visit Victoria Falls.

Explore this land of potent beauty to discover one of the seven natural wonders of the world- Victoria Falls. Journey to this magnificent place and witness the greatest mass of falling water on earth as it plunges down a sheer rock face, spraying its mystical mist hundreds of meters in the air. The Victoria Falls, (Mosi-Oa-Tunya, the smoke that Thunders), without a doubt, constitutes one of the most spectacular natural wonders of the world. You can gaze at the mighty Zambezi as it flows, broad and placid to the brink



of basalt lip seventeen hundred meters wide before taking a headlong plunge into the frothy chasm of the gorge below. Overnight in Victoria Falls.

### JULY 12<sup>th</sup>: Victoria Falls - Chobe National Park, Botswana - Victoria Falls

Early morning after breakfast, drive to Chobe National Park in Botswana – home of the great African elephants. Cross over the border into Botswana by road. Arrive in Chobe National Park and proceed on tour of Chobe National Park. Enjoy a full day safari at Chobe National Park in Botswana that will bring you closer to African elephants.



After lunch at a Lodge, enjoy the Jungle Safari in the Chobe National Park. The park is probably best known for its spectacular elephant population: 70,000 elephants today, it is actually the highest elephant concentration of Africa

Moreover, most of them are probably part of the largest continuous surviving elephant population on Earth. The elephant population seems to have solidly built up since 1990, from a few thousand. They have not been affected by the massive illicit exploitation of the 1970s and 1980s.

One thing is a given in Chobe: just a brief drive along any of its roads quickly reveals a torn branch, a trumpeting call, an enormous grey shape ghosting out of the bush ...all the unmistakable signs that this is elephant territory. At Chobe, you can get so close to elephants that you can hear the deep





# POLLINA TOURS AND TRAVEL, INC.

95 Broadway Suite 5, Hicksville, NY 11801 Tele: 516 358 1301

Email: [pollin@earthlink.net](mailto:pollin@earthlink.net)

## SOUTH AFRICA, ZIMBABWE, BOTSWANA & KENYA

**JULY 04 – 20, 2025**



rumblings as they communicate with each other. In the evening return to your hotel in Victoria Falls. Overnight in Victoria Falls.

### JULY 13<sup>th</sup>: Victoria Falls

Day at leisure for optional helicopter ride (subject to weather condition and availability) over the Victoria Falls and other activities.



Overnight in Victoria Falls

### JULY 14<sup>th</sup>: Victoria Falls / Nairobi, Kenya

After breakfast, depart to Vic Falls airport for your flight to Nairobi, Kenya. Arrive in Nairobi and after migrations and customs formalities, transfer to your hotel. Overnight in Nairobi hotel.

### JULY 15<sup>th</sup>: Nairobi / Masai Mara

Pick up from Nairobi by our driver/guide and get a brief introduction about the Safari. Leave for Masai Mara. Check-in at your Safari Lodge in time for lunch. After lunch and refreshments, an evening game drive will be optional or relaxation at the hotel.



In the faunal sense, no part of Africa is richer or more eventful than Mara, which has managed to enshrine for space Age the wonderment of pristine wilderness. overnight at Safari Lodge.

### JULY 16<sup>th</sup>: Masai Mara

After breakfast, proceed to the park for a full day game drive, having carried a packed lunch so that you can have ample time to carry out a comprehensive game drive. After lunch, continue with the game drive and head back to the camp at around 4pm. Overnight at Safari Lodge.

### JULY 17<sup>th</sup>: Masai Mara - Nairobi

Have an early morning game drive at 6:00 am. Return to the lodge for breakfast at around 8:30am and check out the facility and leave for Nairobi.

A stopover for lunch on the way, which you will be advised by the driver on the best place, at an extra cost. Overnight in Nairobi



# POLLINA TOURS AND TRAVEL, INC.

95 Broadway Suite 5, Hicksville, NY 11801 Tele: 516 358 1301

Email: [pollin@earthlink.net](mailto:pollin@earthlink.net)

## SOUTH AFRICA, ZIMBABWE, BOTSWANA & KENYA

JULY 04 – 20, 2025

### JULY 18<sup>th</sup>: Nairobi

After breakfast, proceed on tour of Nairobi. Learn about two of Kenya's most famous animals on this tour to the David Sheldrick Elephant Orphanage and the Giraffe Centre.



See the animals in a safe, contained environment focused on rehabilitation and conservation. Observe baby elephants during an allotted viewing time and learn about the dangers they face. Participate in a supervised feeding of the endangered Rothschild giraffes and learn about conservation efforts.

Overnight in Nairobi.

### JULY 19<sup>th</sup>: Nairobi departure

Morning free to relax or for last-minute shopping etc at your own pace.

In the afternoon check out of the hotel and transfer for dinner at local restaurant and then transfer to airport for flight to USA

### JULY 20<sup>th</sup>: Arrive in the US

Arrive in USA with happy memories of East and South Africa.

[BOOK BY CLICKING HERE](#)

### LAND PACKAGE

(PER PERSON SHARING DOUBLE ROOM)

FIRST CLASS HOTEL US \$ 5990 Per person  
sharing double room

Single Supplement US \$ 1595

### Our Land cost includes:

- All intra-Africa airfare in coach class as per program.
- First Class hotel/Jungle Lodge accommodation sharing a standard room as per the hotels mentioned in program or similar category selected by Pollina Tours.
- Private services
- All transfers, sightseeing, excursion tours as per program by air-conditioned coach
- English speaking guide.
- Entrance fee to the place of visit.
- Buffet breakfast daily at the hotel.
- Dinner daily at local restaurants or hotels.
- All three meals during Jungle safari tour
- All applicable airport taxes and fuel surcharges

Please read all the terms and conditions carefully before filling in the Tour Booking form and mailing your deposits

**Not Included:** Any international airfare and related taxes; passport and visa expenses; Government arrival and departure taxes; Visa fees, any airfare, meals not mentioned above, Travel Insurance, baggage handling





# POLLINA TOURS AND TRAVEL, INC.

95 Broadway Suite 5, Hicksville, NY 11801 Tele: 516 358 1301

Email: [pollin@earthlink.net](mailto:pollin@earthlink.net)

## SOUTH AFRICA, ZIMBABWE, BOTSWANA & KENYA

JULY 04 – 20, 2025

fee, gratuity, any beverages alcoholic or non-alcoholic, items of personal nature such as laundry, telephone, lunch, dinner, room service, any increase in airfare or government-imposed taxes, any other items not mentioned in the tour inclusion list.

**Travel Insurance:** Pollina Tours do not sell any Travel Insurance. We strongly recommend that you must directly obtain from any Insurance company of your choice a comprehensive Travel Insurance coverage, including but not limited to trip cancellation, delay, loss of deposit, medical expenses, personal accidents and death, loss of baggage, personal belongings. "Cancel for Any Reason" travel insurance policy is one option that you must discuss with your Travel Insurance Company, as it offers a wider range of coverage if you cancel for any reason. Most Travel Insurance companies want you to buy insurance at the time of making your initial tour deposit to obtain the best coverage. Please contact and discuss all options available to you from the Travel Insurance companies of your choice before signing up on the tour.

**Tour Payment:** We require a \$ 1000 deposit per person at the time of booking and the final remaining balance payment will be due 120 days before departure. Please make the check payable to POLLINA TOURS AND TRAVEL, INC.

**Cancellation and Refund:** We highly recommend purchasing Travel Insurance policy from the travel insurance company of your choice, covering all eventualities including, but not limited to, trip delay, trip cancellation, medical evacuation, illness, disease, death, accident etc. that can protect yourself from cancellation penalties, in case the tour is cancelled by you or due to circumstances beyond the control of POLLINA Tours, its agents, or service providers. An administrative fee of US \$ 500.00 per person will be charged for any cancellation once the tour is booked. A 25% cancellation fee on total tour cost will be charged if the bookings are cancelled between 89-60 days prior to departure. A 50% cancellation fee on total tour cost will

be charged if the bookings are cancelled between 59-30 days prior to departure. A 75% cancellation fee on total tour cost will be charged if the bookings are cancelled between 29-03 days prior to departure. For a later cancellation, or for any unutilized services, no refund will be permissible. It is mandatory for passengers to make all cancellations in writing, stating the reason for cancellation and same must be received in our office on a prompt basis. Most refunds generally take 6-8 weeks to process.

**Travel Documents:** It is the sole responsibility of each passenger/tourist to obtain and verify that all their travel documents, such as passport, visa, and airline tickets, vaccination requirements etc are in order and meets the guidelines to embark on the trip.

**Health:** You must consult with your physician every important aspect of your health-related issues, including, sickness, vaccinations, such as Yellow Fever, Hepatitis, malaria prophylaxis etc. to ensure that you are in good health to engage in overseas travel. In addition, you are expected to carry your own regular medications, which may not be available abroad. Please note: all our overseas tours require considerable walking and driving, sometimes in uneven, dusty and bumpy road conditions. You may also need to take stairs and inclines during the tour. No individual assistance to passengers requiring wheelchair can be provided, as many places may not be wheelchair accessible and may be challenging for the physically handicapped. For Information on vaccinations and other health precautions, such as safe food and water precautions and insect bite protection, may be obtained from the Centers for Disease Control and Prevention's hotline for international travelers at 800-CDC-INFO (800- 232-4636) or via the CDC's Internet site, at [www.cdc.gov/travel](http://www.cdc.gov/travel). For information and health guidelines about outbreaks of infectious diseases such as COVID 19 and other disease abroad, please consult the World Health Organization's (WHO) official website. All passengers are personally responsible for



# POLLINA TOURS AND TRAVEL, INC.

95 Broadway Suite 5, Hicksville, NY 11801 Tele: 516 358 1301

Email: [pollin@earthlink.net](mailto:pollin@earthlink.net)

## SOUTH AFRICA, ZIMBABWE, BOTSWANA & KENYA

JULY 04 – 20, 2025

ensuring that they are medically fit to travel.

**Group hotel booking:** POLLINA TOURS makes the booking of the hotel room in the specified hotel in “Standard” twin- bedded (two single beds) rooms or “Standard” double bedded (one double bed) room with private facilities, unless you have specifically requested and paid for an upgraded room category. Special requests, such as bed types, smoking preference and connecting rooms are subject to availability. Room selection in all cases, unless otherwise reserved, is strictly at the discretion of the hotel's management on a run-of-house basis.

**Meals:** POLLINA TOURS make the reservation for the Group Lunch or Dinner arrangements at the hotel or local restaurants based on the hotel or restaurant's Buffet or Set dinner menu basis policy. All efforts are made to offer Vegetarian and Non-Vegetarian menu choice to the Group members. However, Pollina Tours cannot make multiple dinner menu requests based on each group members' individual request, likings, and disliking. No special dietary request can be guaranteed. Due to the presence of food allergens in the processing environment and in meals and snacks served, Pollina Tours and its suppliers cannot guarantee an allergen-free meal. We encourage customers to review any health/food allergy concerns with their physicians prior to joining the tour.

**Airline Group Booking and Seat Assignments:** POLLINA TOURS makes the booking with the Group Department of the airline, which means all the group members must travel together to and from a common gateway, as one Group. The Group tickets are lower fare tickets and carry restrictions. The tickets are nonrefundable, non- transferrable, non-re-routable, and non-endorsable. Policies governing seat assignments for groups vary greatly by airline. Most airlines currently offer preferred seating, a system which allows them to charge additional fees for preferable seats. As a result, many seats displayed on airline seat maps are set aside for clients willing to pay additional fees for them. Some seats

may only be accessible at airport check-in. Specific Seat assignments preferences are not guaranteed by Pollina Tours. Loss of assignments may occur, at any time, due to airline schedule changes, or even because of individual passengers making changes directly with airlines on their group seat assignments. In many cases, airlines will not assign seats for groups until the group booking is closed for ticketing usually 30 days prior to departure. At this time, Pollina Tours will do all possible to seat passengers together and in the best available seats. However, it may not be possible for Pollina Tours to assign seats of each passenger's personal choice. Once assigned, typically seats may only be changed, subject to availability, at airport check-in. Airline reservation agents are often prohibited from assisting with seat requests for Group Reservations from individual passengers.

**Responsibility:** Responsibility: POLLINA Tours & Travel, Inc. and/or their agents give notice that all tickets, vouchers and the coupons issued by them and all arrangements for transportation or for conveyance/hotel accommodation, sightseeing, excursions, etc., made by them, as AGENTS of the passenger upon the express condition that they shall not be held liable for any injury, damage, loss, accident, death, delay or irregularity which may be occasioned either by reason or defect of any vehicle, or through the act or default of any person or company engaged in conveying or housing the passengers or in connection therewith, or of any hotel proprietor or employee. POLLINA Tour and/ or their agents can accept no responsibility for cancellation penalties or losses or incidental expenses due to delay or change in schedules of airline, rail, motor coach, cruise or any transportation companies etc., hotel overbooking or default, sickness, injury, death, weather, strike, political or social unrest, disease, epidemic, pandemic, terrorism, natural calamities, quarantine or any other causes beyond the control of POLLINA Tours & Travel, its agents and suppliers of services. All such losses or incidental expenses will have to be borne by the passengers. Baggage is at the owner's risk throughout the tour.





# POLLINA TOURS AND TRAVEL, INC.

95 Broadway Suite 5, Hicksville, NY 11801 Tele: 516 358 1301

Email: [pollin@earthlink.net](mailto:pollin@earthlink.net)

## **SOUTH AFRICA, ZIMBABWE, BOTSWANA & KENYA**

**JULY 04 – 20, 2025**

Obtaining a suitable travel insurance policy to cover the medical and non-medical eventualities from any Travel Insurance company of your choice is solely the responsibility of each passenger/tourist booked on our tour. POLLINA Tours & Travel reserves the right to accept or reject any person as tour participants, to expel any tour participants from the tour, to make changes in the itinerary whenever the company deems it is necessary for the comfort, safety and convenience of the participants or their agents/service providers. Although, all safety measures are taken by our suppliers to ensure you have an enjoyable and safe tour. However, our Service provider will require you to sign their responsibility form to not hold them responsible for any injury, accident, death, etc., caused to you during any adventure tourism activities, jungle safari, etc. which is beyond their control. All prices are quoted in US Dollars. The transportation, airlines, rail, cruise, ferry companies, etc., concerned are not to be held responsible for any act, omission, or events during the time passengers are not on board their carriers and conveyance. The passenger's contract in use by the airline carrier, when issued, shall constitute the sole contract between the transportation company and the purchaser of the Tour(s) and/or passengers. Typically, check-in time at the hotels is 3:00 PM and check out time is 12 noon. The sequence of the itinerary is subject to change, due to circumstances beyond our control.

change in schedules of airline, rail, motor coach, cruise or any transportation companies etc, hotel overbooking or default, sickness, injury, death, weather, strike, political or social unrest, disease, epidemic, pandemic, terrorism, natural calamities, quarantine or any other causes beyond the control of Pollina Tours & Travel, its agents and suppliers of services. All such losses or incidental expenses will have to be borne by the passengers. Baggage is at the owner's risk throughout the tour. Obtaining a suitable travel insurance policy to cover the medical and non-medical eventualities from any Travel Insurance company of your choice is solely the responsibility of each passenger/tourist booked on our

tour. Pollina Tours & Travel reserves the right to accept or reject any person as tour participants, to expel any tour participants from the tour, to make changes in the itinerary whenever the company deems it is necessary for the comfort, safety and convenience of the participants or their agents/service providers. Although, all safety measures are taken by our suppliers to ensure you have an enjoyable and safe tour. However, our Service provider will require you to sign their responsibility form to not hold them responsible for any injury, accident, death, etc, caused to you during any adventure tourism activities, jungle safari, etc. which is beyond their control. All prices are quoted in US Dollars. The transportation, airlines, rail, cruise, ferry companies, etc, concerned are not to be held responsible for any act, omission, or events during the time passengers are not on board their carriers and conveyance. The passenger's contract in use by the airline carrier, when issued, shall constitute the sole contract between the transportation company and the purchaser of the Tour(s) and/or passengers. Typically, check-in time at the hotels is 3:00 PM and check out time is 12 noon. Sequence of the itinerary is subject to change, due to circumstances beyond our control





# POLLINA TOURS AND TRAVEL, INC.

95 Broadway Suite 5, Hicksville, NY 11801 Tele: 516 358 1301

Email: [pollin@earthlink.net](mailto:pollin@earthlink.net)

**SOUTH AFRICA, ZIMBABWE, BOTSWANA & KENYA**

**JULY 04 – 20, 2025**



[BOOK BY CLICKING HERE](#)

PLEASE CONTACT POLLINA TOURS & TRAVEL,  
INC. TODAY TO BOOK YOUR CRUISE SPACE:



## POLLINA TOURS AND TRAVEL, INC.

95 BROADWAY SUITE # 5,  
HICKSVILLE, NEW YORK 11801

Tele:(516) 358 1301

email: [pollin@earthlink.net](mailto:pollin@earthlink.net) web:

[www.pollinatour.com](http://www.pollinatour.com)

